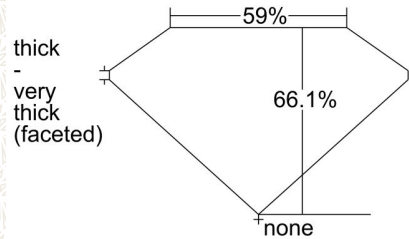


GIA NATURAL COLORED DIAMOND REPORT

August 16, 2021  
 Report Type ..... Grading Report  
 GIA Report Number ..... 6214949804  
 Shape and Cutting Style ..... Pear Modified Brilliant  
 Measurements ..... 15.83 x 10.14 x 6.70 mm

Carat Weight ..... 7.51 carat  
 Color Grade ..... Fancy Brownish Yellow  
 Color Origin ..... Natural  
 Color Distribution ..... Even  
 Clarity Grade ..... Internally Flawless  
 Proportions:



Profile not to actual proportions

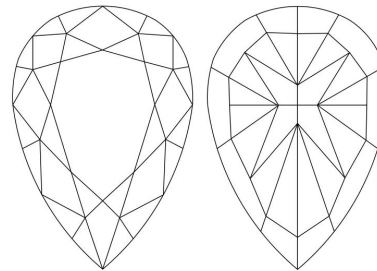
Polish ..... Excellent  
 Symmetry ..... Excellent  
 Fluorescence ..... None  
 Inscription(s): GIA 6214949804

**Comments:** Surface graining is not shown. Minor details of polish are not shown.

ADDITIONAL INFORMATION



CLARITY CHARACTERISTICS



The results documented in this report refer only to the diamond described, and were obtained using the techniques and equipment available to GIA at the time of examination. This report is not a guarantee or valuation. For additional information and important limitations and disclaimers, please see [GIA.edu/terms](http://GIA.edu/terms) or call +1 800 421 7250 or +1 760 603 4500. ©2017 Gemological Institute of America, Inc.

[reportcheck.gia.edu](http://reportcheck.gia.edu)



 THE SECURITY FEATURES IN THIS DOCUMENT, INCLUDING THE HOLOGRAM, SECURITY SCREEN AND MICROPRINT LINES, IN ADDITION TO THOSE NOT LISTED, EXCEED DOCUMENT SECURITY INDUSTRY GUIDELINES.

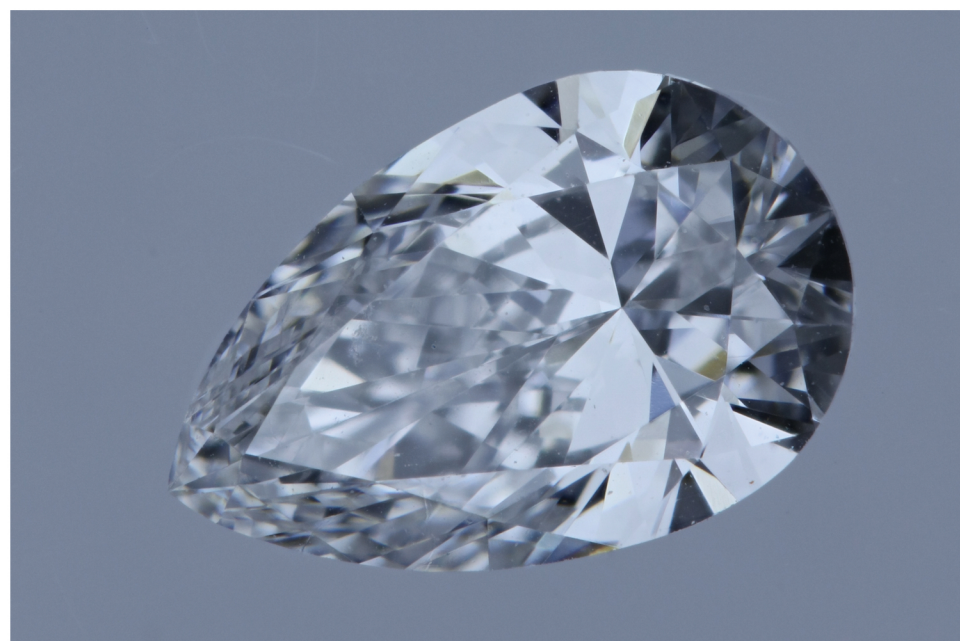
# Natural Diamond ID Plus Card

The stone in accordance with the mentioned number has been identified as a natural gem diamond.

Report Number	180000064796
Date of Issue	2018-03-26
Shape	pear
Weight (carat)	0.46232 ct
Fluorescence	nil
Colour	exceptional white + (D)
Clarity	VVS2
Cut	
Proportions	-
Polish	very good
Symmetry	good
Measurements	6.63 x 4.25 x 2.58 mm
Girdle	very thick 6.5 % faceted
Culet	pointed
Total Depth	60.7 %
Table Width	59 %
Crown Height ( $\beta$ )	14.0 %
Pavilion Depth ( $\alpha$ )	40.5 %
Length Halves Crown	-
Length Halves Pavilion	-
Sum $\alpha$ & $\beta$	-

## Inscriptions:

- Inscription on girdle: HRD ID 180000064796



# Natural Diamond ID Plus Card

The stone in accordance with the mentioned number has been identified as a natural gem diamond.

Report Number	180000064801
Date of Issue	2018-03-26
Shape	pear
Weight (carat)	0.46800 ct
Fluorescence	nil
Colour	exceptional white + (D)
Clarity	VVS1
Cut	
Proportions	-
Polish	very good
Symmetry	good
Measurements	6.66 x 4.32 x 2.71 mm
Girdle	medium 3.5 % faceted
Culet	pointed
Total Depth	62.7 %
Table Width	54 %
Crown Height ( $\beta$ )	16.5 %
Pavilion Depth ( $\alpha$ )	43.0 %
Length Halves Crown	-
Length Halves Pavilion	-
Sum $\alpha$ & $\beta$	-

## Inscriptions:

- Inscription on girdle: HRD ID 180000064801

